

### The new performance.

You could expand earlier IBM PCs after you bought them, but the Personal System/2 is expanded before you even open the carton. Advanced graphics, parallel and serial ports, a port for pointing devices, and more are now standard. So performance goes up and cost doesn't.

Reliability has been improved as well. IBM's advanced memory technology and new circuit integration make for fewer components within the systems.

And Models 50, 60 and 80 share something that's totally new. We call it IBM Micro Channel™ but think of it as a highway.

Our first PCs were built around a two-lane street. Usually that's enough, but there can be traffic jams. Your sales figures might have to wait on the corner while your mailing list goes by.

The new system is like an expressway. There are more lanes open in both directions. The ramps are more smoothly paved, and signals are better synchronized.

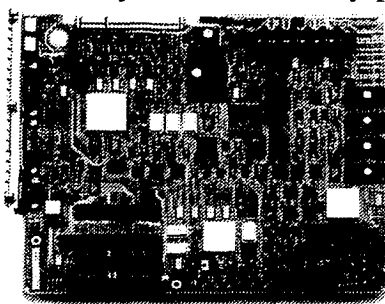
So your data flows more freely.

This is what the 286 and 386 chips have been waiting for. A highway to match their horsepower.

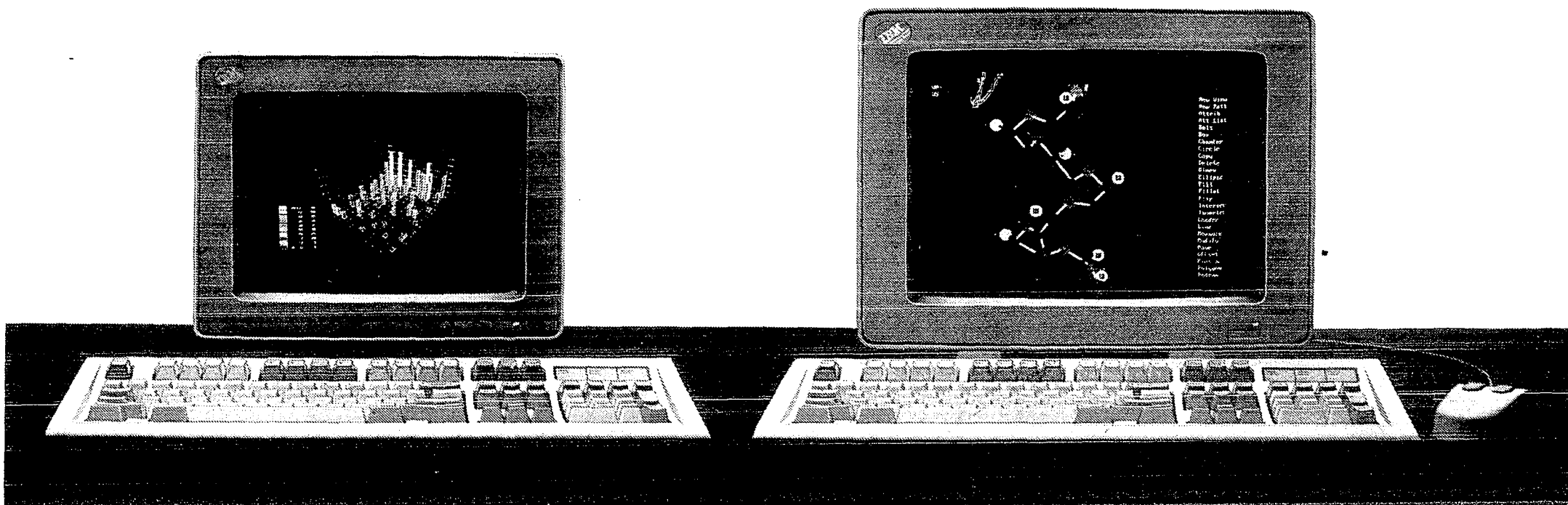
Personal System/2 is being introduced with a new IBM PC DOS Version 3.3 that lets you tap into the new systems immediately and works with all previous IBM PCs.

But much more is coming.

A new IBM Operating System/2™ is in the works. Available later on, for Models 50, 60 and 80, it will bring major advances. Together with IBM Micro Channel, it will make multi-tasking easier, vast memory more accessible, and will allow software to be easier to use and more powerful than ever before.



Every IBM Personal System/2 "planar board" has standard features that used to cost extra.



IBM Personal System/2 Model 60

IBM Personal System/2 Model 80

